



Since 1959

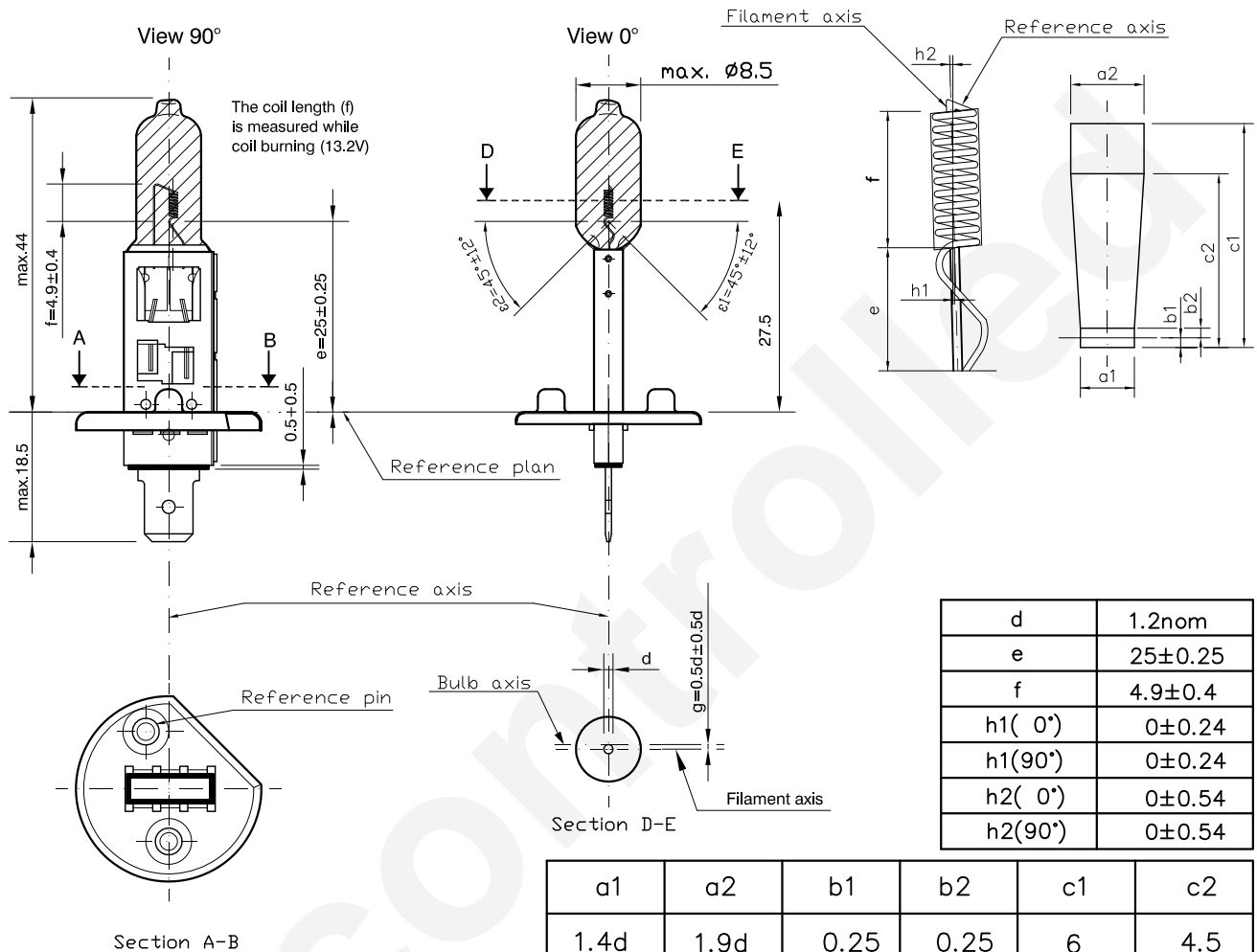
Product Information Sheet

H1 XWU 12V 55W

HIBH1 ULTRAMAX

2013. 04. 10 NEW

2010. 01. 12 OLD



d	1.2nom
e	25±0.25
f	4.9±0.4
h1(0°)	0±0.24
h1(90°)	0±0.24
h2(0°)	0±0.54
h2(90°)	0±0.54

a1	a2	b1	b2	c1	c2
1.4d	1.9d	0.25	0.25	6	4.5

Technical data	R37	FMVSS108
Test voltage	13.2V	12.8V
Power	68W max.	65W max.
Luminous flux	1550lm ± 15%	1410lm ± 15%
Lumen maintenance	90 % min	90 % min
Color temperature	3700K±10%	3600K±10%
Rated life:	at 13.2V	at 14.0V
-characteristic Tc	300 h min	150h average
-B3	150 h min	

Maximum operating temperature:	1: bulb 800°C max
	2: pinch 400°C max

Halogen bulb
H1 12V 55W Xenon White Ultra
Cap: ¹⁾ P14.5s
Type: XWU
ECE R37 (E1) 2XP
FMVSS108 DOT
Bulb mat.: Quartz glass
Made in korea / INCHEON

1) according to IEC 61-1 sheet 7004-46-2